



Second International Conference
on best Practices in World Heritage:
People and Communities

Mahón, Menorca 29 de abril a 2 de mayo 2015

SEGUNDO CONGRESO INTERNACIONAL
DE BUENAS PRÁCTICAS
EN PATRIMONIO MUNDIAL:
PERSONAS Y COMUNIDADES

Alicia Castillo Mena (Ed.)





UNIVERSIDAD
COMPLUTENSE
MADRID



la Caixa



**MENORCA
TALAIÒTICA**

Candidata Patrimoni Mundial
Única al món



CONSELL INSULAR
DE MENORCA



**institut d'estudis
baleàrics**



Edición financiada en el marco del Proyecto HAR2013-46735-R «La dimensión arqueológica en Ciudades Patrimonio Mundial: Avances para la gestión patrimonial en Alcalá de Henares, Puebla y La Habana»

Edita: Universidad Complutense de Madrid

Diseña: JAS Arqueología S.L.U.

© Los autores y Universidad Complutense de Madrid

© Fotografías del congreso: Jaime Almansa, Ana González y Ana Pastor

ISBN: 978-84-606-9264-5 (pdf)



INTRODUCCIÓN – INTRODUCTION	1
Alicia Castillo	
CONFERENCIA INAUGURAL / INAUGURAL LECTURE	
Claire Smith, Flinders University, Australia	
SOCIAL MEDIA AND THE DESTRUCTION OF WORLD HERITAGE AS GLOBAL PROPAGANDA. Redes sociales y la destrucción del Patrimonio Mundial como propaganda.	27
SESIÓN 1: PERCEPCIÓN E INTERPRETACIÓN / SESSION 1: PERCEPTION AND INTERPRETATION	
<hr/>	
Neil Silberman, ICOMOS	
REMEMBRANCE OF THINGS PAST: COLLECTIVE MEMORY, SENSORY PERCEPTION, AND THE EMERGENCE OF NEW INTERPRETIVE PARADIGMS. Memoria de las cosas pasadas: memoria colectiva, percepción sensorial y el surgimiento de un nuevo paradigma interpretativo.	51
Barreiro, David	
ALTAMIRA, TERCERA VIDA. Altamira, Third Life.	63
Saladino, Alejandra et al.	
SAN MIGUEL DE MISIONES Y SERRA DE CAPIVARA, BRASIL: TENSIONES ENTRE POLÍTICAS DE PATRIMONIALIZACIÓN Y COMUNIDADES LOCALES. San Miguel de Misiones y Serra da Capivara, Brazil: tensions between heritage policies and local communities.	81
Moudopoulos-Athanasίου, Faidon	
FROM PAST TO PRESENT: HERITAGE AND CONFLICT; MODERN PROMENADES IN THE ACROPOLIS. Del pasado al presente: patrimonio y conflict; modernos paseos en la Acrópolis.	107
Capela, John; Murtinho, Vítor	
THE DUAL LOGIC OF HERITAGE IN THE FIELD OF ARCHITECTURE. La lógica dual del Patrimonio en el campo de la Arquitectura.	124

Fengjian et al.	
THE ORIENTAL ARCHAEOLOGICAL SITES AND THE COMPOSITION OF ITS LOCAL COMMUNITY. THE PRACTICAL THINKING OF XI' AND LARGE ARCHAEOLOGICAL SITES. Los yacimientos arqueológicos orientales y la composición de sus comunidades locales. La práctica en Xi' y en otros grandes yacimientos.	146
Ionesov, Vladimir I.	
HERITAGE AND MUSEUMS ARTEFACTS AS CULTURAL RESOURCE FOR CREATIVE PRACTICE IN SOCIAL TRANSFORMATION. Patrimonio Cultural y museos como fuentes para la práctica creativa en la transformación social.	156
Menéndez Castro, Sonia	
INTERPRETACIÓN DE LA ARQUEOLOGÍA PREVENTIVA EN LA HABANA VIEJA: AVANCE DEL MODELO A LA PRÁCTICA. An interpretation of preventive archaeology in Havana's historic center: from the model to actual practice.	166
Avdoulos, Eva	
ISTANBUL'S HAGIA SOPHIA: CHALLENGES OF MANAGING SACRED PLACES. Hagia Sophia en Estambul: retos en la Gestión de lugares sagrados.	180
Veysel, Apaydin	
VALUE, MEANING AND UNDERSTANDING OF HERITAGE: PERCEPTION AND INTERPRETATION OF LOCAL COMMUNITIES IN TURKEY. Valor, sentido y conocimiento del Patrimonio Cultural: percepción e interpretación de las comunidades locales en Turquía.	204
Bernal Santa Olalla, Begoña	
¿A QUIÉN PERTENECEN LOS VALORES DE LOS BIENES CULTURALES DECLARADOS PATRIMONIO MUNDIAL? To whom do the values of the cultural assets, declared World Heritage, belong?	212

<p>Álvarez Tejedor, Antonio</p> <p>LOS BIENES DEL PATRIMONIO CULTURAL COMO OBJETO DE ESTUDIO O COMO EXPERIENCIA VIVIDA. The cultural heritage properties as main subject of study or as life experiences.</p>	235
<p>Alexianu, Marius et al.</p> <p>SALT SPRINGS FROM ROMANIA EXPLOITED DURING EARLY ARCHAEOLOGICAL TIMES: A NEW CANDIDATE FOR WORLD HERITAGE. Los Manantiales de Agua Salada de Rumanía, Explotados en Tiempos Arqueológicos: un Nuevo Candidato para el Patrimonio Mundial.</p>	250
<p>Malladi, Koumudi et al.</p> <p>THE MAKING AND UNMAKING OF HERITAGE. Hacer y Deshacer del Patrimonio Cultural.</p>	265
<p>Radulovic, Andrej</p> <p>THE QUESTION OF AUTHENTICITY IN RECOVERIES IN POST-CONFLICT ZONES. La Cuestión de la Autenticidad en los Restablecimientos en Zonas Post-conflicto.</p>	280
<p>Torres González, Lillian</p> <p>ENTRE LA MEMORIA Y EL OLVIDO: EL CASO DE UNA COLONIA INDUSTRIAL EN LA CIUDAD DE PUEBLA, MÉXICO. Between memory and Oblivion: the case of an Industrial Colony at City of Puebla, Mexico.</p>	297
<p>Thierry Palafox, Frederick</p> <p>EL CIELO NO ES PARA TODOS: DIFERENCIAS Y CONTRADICCIONES ENTRE POLÍTICAS PÚBLICAS Y CULTURALES EN LA CIUDAD DE PUEBLA DE LOS ANGELES, MÉXICO. Heaven is not for everybody: differences and contradictions between public and cultural policies in the City of Puebla de los Ángeles, Mexico.</p>	324

**SESIÓN 2: RESOLUCIÓN DE CONFLICTOS E
IMPLICACIÓN SOCIAL / SESSION 2: CONFLICT
RESOLUTION AND SOCIAL IMPLICATION**

- Carlos Montero, Benemérita University, Mexico
LA DEFENSA DEL PATRIMONIO MUNDIAL POR LAS
PERSONAS Y COMUNIDADES DE PUEBLA, MÉXICO. 346
Defense of Puebla World Heritage by its People and
Communities.
- Téllez, Virtudes; Parga-Dans, Eva
ALTAMIRA: HEGEMONÍA DE ÉLITE Y VALOR SOCIAL 355
EN CONFLICTO. Altamira: Elite's Hegemony and Social
Value in Conflict.
- Chinwe, Julie Abara
THE CHALLENGES OF SAFEGUARDING AND 375
SECURING CULTURAL HERITAGE MATERIALS
DURING VIOLENT CONFLICT IN NIGERIA. Retos en
la salvaguarda y seguridad del Patrimonio Cultural en los
conflictos violentos en Nigeria.
- Zotes Flores, Luis
LOS SANTUARIOS DE SO NA CAÇANA: PROPUESTA DE 387
REVALORIZACIÓN PATRIMONIAL. The Sanctuaries in So
na Caçana; Proposal of Heritage Reassessment.
- Castillo Ruiz, José
LA "BICTITIS" O LA ALERGIA SOCIAL (¿O ES SÓLO 407
POLÍTICA?) A LA PROTECCIÓN DE LOS BIENES
CULTURALES DE CARÁCTER TERRITORIAL.
REFLEXIONES Y PROPUESTAS A PARTIR DEL CASO DE
LA VEGA DE GRANADA. The "BICtitis" or social allergy (or
is it only political?) to the protection of cultural property of a
territorial nature. Reflections and proposals from the case of
the Vega de Granada.

Martínez Yáñez, Celia
LA PARTICIPACIÓN SOCIAL EN LA PROTECCIÓN Y
GESTIÓN DE LOS BIENES AGRARIOS INSCRITOS EN
LA LISTA DEL PATRIMONIO MUNDIAL: EJEMPLOS DE
BUENAS PRÁCTICAS Y ESTRATEGIAS DE FUTURO. 438
Social involvement on the protection and management of
agrarian heritage properties inscribed on the World Heritage
List: Best practices examples and future strategies.

Henning, Izabela
WORLD HERITAGE VS LOCAL COMUNITY:
IDENTIFYING THE SOURCES OF CONFLICTS. 466
Patrimonio Mundial frente a Comunidad Local:
Identificación de los temas en conflicto.

Romero Moragas, Carlos et al.
CIUDADANÍA CONTRA EL RASCACIELOS PELLI-
CAJASOL DE SEVILLA. Citizenship against the Pelli-Cajasol 481
skyscraper in Seville.

Jiménez, Marta y Rodríguez, Antonio Manuel
CITIZENS IN DEFENSE OF WORLD HERITAGE:
SUPPORTING THE MOSQUE OF CORDOBA. La 508
ciudadnía en defense del Patrimonio Mundial: apoyo a la
mezquita de Córdoba.

SESIÓN 3: AGENTES IMPLICADOS / SESSION 3: STAKEHOLDERS

Hang Peou, APSARA, Camboya
STAKEHOLDERS OF ANGKOR WORLD HERITAGE SITE
MANAGEMENT. Agentes de la gestión del sitio Patrimonio 525
Mundial de Angkor.

Vargas, Amilcar
IMPACTO DE LA INSCRIPCIÓN DE LA CIUDAD
MAYA DE PALENQUE EN LA LISTA DEL PATRIMONIO 537
MUNDIAL DE LA UNESCO. Impact of the inscription of
the Mayan City of Palenque on the UNESCO World Heritage
List.

- Santisteban Cazorla, Maria Petra, Jesús Rodríguez
Pasamontes & Rosa Pastor Villa 560
LA LONJA DE LA SEDA DE VALENCIA. The Silk Market of
Valencia.
- Capela, Joana; Murtinho, Vítor 573
THE UNIVERSITY OF COIMBRA – ALTA AND SOFIA
WORLD HERITAGE MANAGEMENT AGENTS. La
Universidad de Coimbra Alta y Sofia, gestores del Patrimonio
Mundial.
- Balar Boiges, Lluís; Menchon Bes, Joan 591
GESTIÓN MUNICIPAL DEL PATRIMONIO MUNDIAL
EN TIEMPO DE CRISIS: TARRAGONA. Municipal
management of World Heritage in time of crisis: Tarragona.
- Vu Hong, Nhi 614
CONSERVATION OF CULTURAL HERITAGE FROM
CULTURAL STAKEHOLDERS. El papel de los agentes
culturales en la conservación del Patrimonio Cultural.
- Gornés Hachero, Simón et al. 627
PROCESOS DE PARTICIPACIÓN SOCIAL EN LA
CANDIDATURA DE MENORCA TALAYÓTICA A LA
NOMINACIÓN COMO PATRIMONIO MUNDIAL. Social
participation process in Menorca Talayotic Nomination as
World Heritage

SESIÓN 4: COOPERACIÓN / SESSION 4: COOPERATION

- Yonas Beyene, University of Addis Abeba, Ethiopia 639
COOPERATION IN WORLD HERITAGE SITES: SOME
REFLECTIONS. Cooperación en sitios Patrimonio Mundial:
algunas reflexiones
- Bustamante, Patricio; Saladino, Alejandra 651
RAPA NUI, UNA EXPERIENCIA DE TRABAJO CON LA
COMUNIDAD LOCAL. Rapa Nui, a working experience
with the local community

van den Dries, Monique H.
SOCIAL INVOLVEMENT AS A BUZZ WORD IN WORLD HERITAGE NOMINATIONS. Integración social, palabra de moda en las nominaciones a Patrimonio Mundial. 668

Corbett, Jack & Nelly Robles Garcia
BUILDING SUSTAINABLE COLLABORATIONS: LESSONS FROM MONTE ALBAN'S SISTER PARKS INITIATIVE. 687
Tejiendo colaboraciones sostenibles: Lecciones de las iniciativas de los parques hermanados de Monte Albán.

Masís Muñoz, María Elena
FESTIVAL DE LAS ESFERAS PRECOLOMBINAS: MOTOR PARA EL DESARROLLO SOSTENIBLE EN UNA COMUNIDAD DEL CANTÓN DE OSA, COSTA RICA. 697
Precolombines spheres festiva: engine for sustainable development in a community of Canton de Osa, Costa Rica

SESIÓN 5: ENRIQUECIMIENTO / SESSION 5: WEALTH INCREASER

Jordi Tresserras, University of Barcelona
PATRIMONIO MUNDIAL: REFLEXIONES ANTE LAS CUESTIONES ¿CÓMO GENERAR RIQUEZA? ¿CÓMO IMPLICAR A LA COMUNIDAD? World Heritage: How to generate wealthness? How to engage communities? Some reflections. 711

Farid, Sally
TOURISM IN WORLD HERITAGE SITES AND ITS IMPACT ON ECONOMIC DEVELOPMENT: SOME AFRICAN COUNTRIES CASE STUDIES. Turismo en lugares Patrimonio Mundial y su impacto en el desarrollo económico: algunos casos de estudio en los países africanos. 721

- Faraci, Giorgio
 RECOVERY AND ENHANCEMENT OF THE HISTORIC CENTRE OF SIRACUSA: A BALANCED STRATEGY OF IDENTITY AND DEVELOPMENT, WITH A POSITIVE IMPACT ON THE LOCAL COMMUNITY. Recuperación y mejora del centro histórico de Siracusa: estrategia equilibrada entre identidad y desarrollo con impacto positivo en la comunidad local. 738
- Díaz-Andreu, Margarita et al.
 FROM “DOODLES” TO WORLD HERITAGE: ASSESSING THE IMPACT OF THE INSCRIPTION OF THE ROCK ART OF THE MEDITERRANEAN BASIN ON THE IBERIAN PENINSULA (ARAMPI) ON THE WORLD HERITAGE LIST. De “garabatos” a Patrimonio Mundial: evaluando el impacto de la inscripción del Arte Rupestre del Arco Mediterráneo de la Península Ibérica (ARAMPI) como Patrimonio Mundial. 758
- Domínguez, Marta et al.
 EL PATRIMONIO CULTURAL, RECURSO ESTRATÉGICO PARA EL ENRIQUECIMIENTO ECONÓMICO Y SOCIAL. EJEMPLOS DESDE EL PATRIMONIO MUNDIAL EN ESPAÑA. The Cultural Heritage, strategic resource for economic and social wealth. Examples from the World Heritage in Spain. 777
- Aquino Macapagal, Raymond y Andrada Bermejo, Raoul
 THE BATAD KADANGYAN ETHNIC LODGES PROJECT: COMMUNITY-BASED INDIGENOUS TOURISM IN A UNESCO WORLD HERITAGE RICE TERRACE CULTURAL LANDSCAPE. Proyecto de alojamientos étnicos en Batad Kadangyan: turismo basado en la comunidad indígena en un paisaje cultural de terrazas de arroz declarado Patrimonio Mundial por la UNESCO. 793

Pérez de la Concha, Rafael
EL PAPEL DE LAS REDES MUNICIPALES EN LA
GESTIÓN DEL BINOMIO TURISMO-PATRIMONIO: EL
CASO DE LA SECRETARÍA REGIONAL DE EUROPA
DEL SUR Y MEDITERRÁNEO DE LA ORGANIZACIÓN
DE CIUDADES DEL PATRIMONIO MUNDIAL (OCPM). 811
Municipal networks in the Heritage-Tourism management:
the case of the Regional Secretariat of Southern Europe
and the Mediterranean area of the World Heritage Cities
Organization (OCPM)

Coben, Lawrence S.
PEOPLE NOT STONES: PRESERVING THE PAST BY
PROVIDING A FUTURE. Personas, no piedras: preservar el 834
pasado manteniendo un futuro.

Wang, Chun-Hsi
THE CONSERVATION OF A POTENTIAL WORLD
HERITAGE SITE OF IRRIGATION CULTURAL
LANDSCAPE IN TAIWAN: THE OPPORTUNITY FROM 845
RURAL LANDSCAPE. La conservación de un paisaje
cultura de riego en Taiwan, posible Patrimonio Mundial: la
oportunidad para el paisaje rural.

SESIÓN 6: ACCIONES TRANSVERSALES / SESSION 6: TRANSVERSAL ACTIONS

Eman Alassi, Dubai Municipality, Arab Emirates
HUMAN RIGHT AND WORLD HERITAGE IN
TRANSVERSE CONTEXT. Derechos humanos y Patrimonio 863
Mundial en un contexto transversal.

Sand, Christophe
ON THE EDGE OF A WORLD HERITAGE SITE:
LOCAL COMMUNITIES AND ARCHAEOLOGICAL
PRACTICE RELATED TO THE NOMINATION OF 874
THE NEW CALEDONIA CORAL REEF. Al límite de un
lugar Patrimonio Mundial: comunidades locales y práctica
arqueológica en relación a la nominación de los arrecifes de
coral de Nueva Caledonia.

- García González, Julia
 LOS MUSEOS DEL ACRÓPOLIS Y LA POLÍTICA PATRIMONIAL EN GRECIA. Acropoli's museums and the heritage policy in Greece. 888
- Barbosa Frederico, Isabela et al.
 ACCIONES TRANSVERSALES Y ARQUEOLOGÍA PÚBLICA: PROPUESTAS PARA DOS CASOS BRASILEÑOS. Transversal actions and public archaeology: proposals for two cases Bralizian. 904
- Harlov, Melinda
 HOLLÓKO – A HUNGARIAN CASE STUDY FOR THE FRUITFUL COOPERATION OF LOCALS AND PROFESSIONALS. HOLLÓKO, un caso de estudio húngaro sobre la fructífera cooperación entre locales y profesionales. 922
- Menchon Bes, Joan et al.
 LIBRO BLANCO DE LA GESTIÓN DEL PATRIMONIO HISTORICO-ARQUEOLÓGICO EN LAS CIUDADES PATRIMONIO DE LA HUMANIDAD DE ESPAÑA. White Paper on the management of historical and archaeological heritage in the Spanish Group of World Heritage Cities. 936
- Mestre, María
 PROYECTOS TRANSVERSALES DESDE LA EDUCACIÓN: LA CIUDAD COMO ESPACIO DE INVESTIGACIÓN URBANA Transversal education projects: The city as an urban research space. 957
- Pimentel, João et al.
 PARQUES DE SINTRA MANAGEMENT MODEL: THE PALACE OF PENA CASE STUDY. El modelo de Gestión de los Parques de Sintra: el Palacio de la Pena como caso de estudio. 971

Hiriart Pardo, Carlos A.

EL CENTRO HISTÓRICO DE MORELIA (MÉXICO): ACCIONES TRANSVERSALES Y ESTRATEGIAS PARA SU CONSERVACIÓN INTEGRAL Y GESTIÓN TURÍSTICA FRENTE A LA CRISIS DE INSEGURIDAD. Morelia Historic Center (Mexico): Transversal actions and strategies for its integral conservation and tourist management regarding the safety crisis. 986

Robrahn-González, Erika M.

INTEGRATING COMMUNITIES FROM THE PERSPECTIVE OF CONTINUOUS ARCHAEOLOGY: A CASE STUDY OF RIO DE JANEIRO, BRAZIL. Integrando comunidades desde una perspectiva de continuidad arqueológica: un estudio de caso en Río de Janeiro, Brasil. 1009

PÓSTERES / POSTERS

Mureddu, Laura y Pastor Pérez, Ana

APROXIMACIÓN A LA PERCEPCIÓN DEL PATRIMONIO MUNDIAL EN CERDEÑA: LA VISIÓN DE LAS NUEVAS GENERACIONES. An approach to World Heritage perception at Sardinia: the next generation's vision. 1025

Compte-Pujol, Marc

LA PERCEPCIÓN CIUDADANA DE LA MARCA PATRIMONIO MUNDIAL EN BARCELONA. Public perception of the World Heritage brand in Barcelona. 1045

EQUIPO REDES SOCIALES

EL PATRIMONIO MUNDIAL A TRAVÉS DE LAS REDES SOCIALES DEL II CONGRESO INTERNACIONAL DE BUENAS PRÁCTICAS EN PATRIMONIO MUNDIAL: PERSONAS Y COMUNIDADES. World Heritage Through The Social Network Of The Ii International Conference Of Best Practices In World Heritage: People And Communities. 1071

Arellano, Andrea
REPRESENTAR, PRACTICAR Y REPENSAR EL
PATRIMONIO CULTURAL. EL CASO DE SAN ANDRÉS
CALPAN, PUEBLA. Representing, Practice and Rethinking
Cultural Heritage. The case of San Andrés Calpan, Puebla. 1088

Depalmas, Anna et al.
COMUNICAR LAS RELACIONES ENTRE LAS ISLAS DEL
MEDITERRÁNEO: EL CASO DE MENORCA Y CERDEÑA
EN LA PREHISTORIA. To communicate the relationships
between the Mediterranean islands: the case of Menorca and
Sardinia in Prehistory. 1104

Kalazich, Fernanda R.
LA CRIÓNICA PATRIMONIAL: ¿NO TOCAR PARA
PRESERVAR? Crionic Heritage: not touching in order to
preserve. 1114

Zivaljevic, Natasa & Kurtovic, Nadja
LAS ACCIONES TRANSVERSALES PARA LA MEJORA DE
LA GESTIÓN DEL PATRIMONIO EN SERBIA. Transversal
Actions for Improving Heritage Management in Serbia 1128

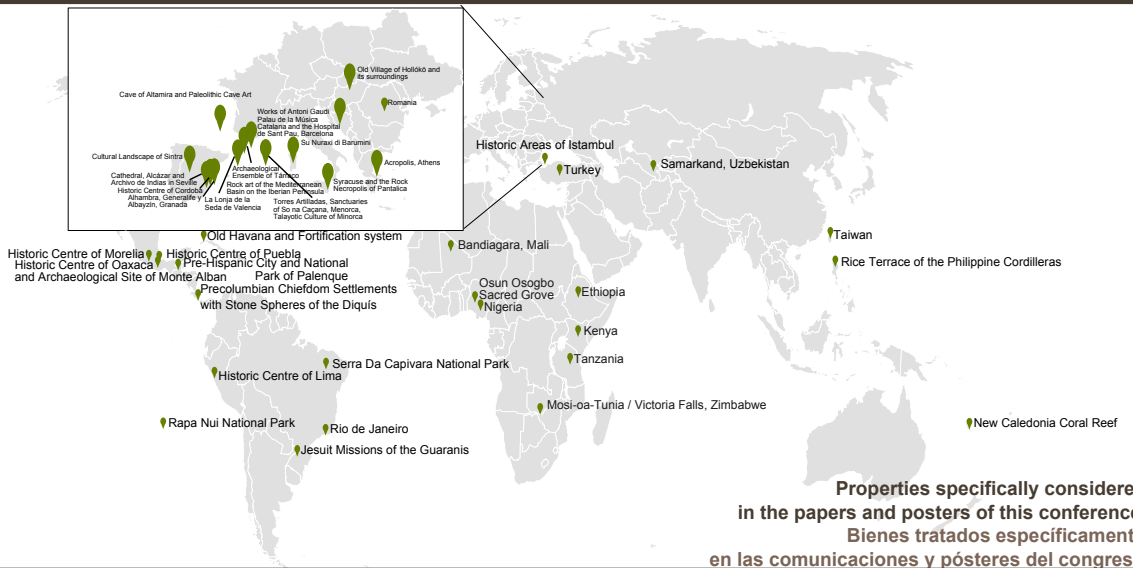
DOCUMENTO DE BUENAS PRÁCTICAS i-ES

BEST PRACTICES DOCUMENT i-EN



2nd International Conference
on Best Practices in World Heritage
People and Communities
II Congreso Internacional
de Buenas practicas en Patrimonio Mundial
Personas y Comunidades

Mahón, Menorca, Balearic Islands
April 29 to May 2, 2015



**Properties specifically considered
in the papers and posters of this conference/
Bienes tratados específicamente
en las comunicaciones y pósters del congreso**

Por / by: Karina Rodríguez

Sesión 1

Percepción e Interpretación



Session 1

Perception and Interpretation

**SALT SPRINGS FROM ROMANIA EXPLOITED DURING
EARLY ARCHAEOLOGICAL TIMES:
A NEW CANDIDATE FOR WORLD HERITAGE**

*Los Manantiales de Agua Salada de Rumanía, Explotados en Tiempos
Arqueológicos: un Nuevo Candidato para el Patrimonio Mundial*

Marius Alexianu (1), Roxana-Gabriela Curcă (1), Ștefan Caliniuc (2)

(1) “Alexandru Ioan Cuza” University of Iași; mariusalexianu@yahoo.com,
roxanigabriela@yahoo.com

(2) SC Arheomanagement SRL, Iași, Romania; stefan.caliniuc@gmail.com

ABSTRACT

Our approach emphasizes on the importance of the first forms of salt springs exploitation meant to obtain recrystallized salt for the development of prehistoric human communities within the continental inlands of Europe. Although it does not compare with the monumental dimension of World Heritage, the exploitation of some salt springs in Eastern Romania goes back around 8 millennia; they may be the oldest such exploitations in the world, as proven by ¹⁴C calibrated data. What differentiates Romanian salt springs from other famous similar areas in Europe is the continuity of exploitation and utilization of natural brine. Actually, these resilient behaviours explain the creation of a whole and complex universe of salt, which also represents a unique point of reference within the intangible World Heritage. It is through this association in variable proportions between tangible (non-monumental) and intangible that these salt springs comprising the oldest traces of salt exploitation can be considered elements of World Heritage. Today, important personalities in the fields of archaeology, anthropology and history posit that salt is a major reference for the development of the entire humanity. Obviously, the breakthrough of this idea requires awareness efforts targeting, on one hand, local communities in those areas and, on the other, national and international scientific and cultural environments concerned with the World Heritage. In this context, a proper motivation is the fact that the last two decades have witnessed an intensification of research on salt, which turned this topic one of the major themes within European archaeology and ethno-archaeology. In terms of local community awareness concerning the importance of salt springs in the economic development of a (micro) area over time, it is worth underlining mostly the specialists' efforts of presenting this topic in the media. Moreover, the impact of a recent initiative of the two museums in the area (Piatra Neamț and Târgu Neamț)—establishing distinct sections that represent, by using museum-inspired means, both archaeological vestiges and traditional practices of natural brine exploitation and utilization—will prove its extent in time. Certain local authorities and private entrepreneurs have pinpointed that valorising tourist areas comprising

the oldest traces of salt exploitation in Romania is an imminent issue. The greatest challenge is finding a balance between the civilization improvements (upgraded access roads, upgrading operating areas, etc.) and the protection of still-alive traditional practices of salt exploitation and use, within rural areas. Certain local authorities and private entrepreneurs have pinpointed that valorising tourist areas comprising the oldest traces of salt exploitation in Romania will become, sooner or later, an imminent issue. The greatest challenge is finding a balance between the civilization improvements (upgraded access roads, upgrading operating areas, etc.) and the protection of still-alive traditional practices of salt exploitation and use, within rural areas.

Key words: Romania, salt springs, local communities, natural heritage, intangible heritage, tangible heritage.

RESUMEN

Nuestro planteamiento resalta la importancia de las primeras formas de explotación de manantiales de agua salada, que se emplearon en obtener sal recristalizada, para el desarrollo de las comunidades humanas prehistóricas ubicadas en la Europa continental. Aunque no puede compararse con la dimensión monumental del Patrimonio Mundial, la explotación de algunos manantiales de agua salada en el Este de Rumanía se remonta a unos 8 milenios atrás; podrían ser las más antiguas explotaciones de este tipo del mundo, según lo prueban las dataciones de C14 calibradas. Lo que diferencia a los manantiales de agua salada rumanos de otras zonas similares de Europa, reconocidas a nivel mundial, es la continuidad de las explotaciones y la utilización de la salmuera natural. De hecho, esta resiliencia comportamental explica la creación, en su conjunto, de un complejo universo de sal, que representa un punto de referencia único dentro del intangible Patrimonio Mundial. Mediante esta asociación, en proporciones variables, de lo intangible (no-monumental) y lo tangible, estos manantiales de agua salada que contienen los más antiguos rastros de la explotación de sal podrían ser considerados elementos del Patrimonio Mundial. Hoy en día, personalidades importantes del ámbito de la arqueología, antropología e historia postulan que la sal es una importante referencia para el desarrollo de toda la humanidad. Evidentemente, la imposición de esta idea requiere esfuerzos de concienciación, dirigidos hacia las comunidades locales, por un lado, y, por el otro, hacia el ámbito cultural y científico preocupado por el Patrimonio Mundial a nivel nacional e internacional. En este contexto, una motivación adecuada consiste en el hecho de que las últimas dos décadas han conocido una intensificación de las investigaciones acerca de la sal, que convirtieron este asunto en uno de los temas de mayor interés dentro de la arqueología y etnoarqueología europeas. En cuanto al grado de concienciación de las comunidades locales respecto a la importancia — a lo largo del tiempo — de los manantiales de agua salada para el desarrollo económico de un (micro) área, hay que resaltar los esfuerzos de los especialistas para conseguir cobertura mediática. Además, el impacto de una reciente propuesta de los dos museos del área (Piatra Neamț y Târgu Neamț) —

de establecer secciones distintas que representen, empleando recursos museísticos, tanto vestigios arqueológicos como prácticas tradicionales de explotación y uso de la salmuera — quedará demostrado con el paso del tiempo. Algunas autoridades locales, junto con empresarios del ámbito privado señalaron que la valorización de zonas turísticas relacionadas con las huellas más antiguas de explotación de la sal en Rumanía es una cuestión de planteamiento inminente. El mayor reto es encontrar un equilibrio entre las mejoras impuestas por la civilización (camino de acceso modernizados, áreas de funcionamiento perfeccionadas etc.) y la protección de las prácticas tradicionales de explotación y uso de la sal que aún perviven en las zonas rurales.

Palabras clave: *Rumanía, manantiales de agua salada, comunidades locales, patrimonio intangible, patrimonio tangible.*

The prehistoric exploitation of salt springs has become an interesting theme in European archaeology for a long time now. The most spectacular discoveries were made at first in Germany and France, also on account of, quite naturally, the advancement of archaeological research in these countries.

Impressive mounds of ceramic debris (briquetage) in Halle (Salle) dated back to 3500–900 BC—a clear sign of salt spring exploitation in the area—became famous in the archaeological world since the 19th century. Equally famous became the Moselle valley area near Seille (Lorraine, France), where research begun at the very beginning of the 20th century and revealed huge banks of debris dated back to the 8th century B.C., located in a salt spring filled area of more than 200 hectares. This tangible heritage completely lacking an aesthetic dimension, which is usually gives prominence to certain artefacts, gradually began to be increasingly appreciated from a totally different perspective, that of technological innovation, namely the obtaining of salt crystals of a certain shape (salt cakes) from salt water. As usual, after these first impressive findings, others more or less spectacular ones followed, which multiplied discoveries in a spatial sense without exceeding a certain chronological inferior limit, as they usually did not exceed the Bronze Age (Nenquin 1961). Since Nequin's synthesis, research concerning the archaeology of salt, especially research related to the exploitation of salt springs, has evolved considerably, especially in the last two decades, when discoveries dating back to the Chalcolithic and even the Early Neolithic periods have multiplied. It is significant in this regard that in the remarkable recent synthesis of the salt in the prehistory of Europe, there are substantial sections in chronological order under the heading Briquetage (Harding 2013, 43-52). Given the archaeological research advance in Western Europe, these discoveries, which begun to arouse interest rather as a cause of their age, mostly took place in this European area. But, since the last quarter of the last century, Southeastern Europe has progressively imposed its self internationally, with reference sites found in Romania, Bosnia and Bulgaria (Harding 2013, 44-51). Given the multitude of salt springs in Romania, around 3000 in number (Romanescu 2014), it was not by accident that some of the most

interesting and old discoveries not only in Europe, but even worldwide, took place here (Figure 1).

Taking into account that the archaeological data looked promising, mainly in regard to their antiquity, the problems of the exploitation of Moldavian salt water springs came to be approached within international research programs. Among these, we may mention the following: (1) two UK-Romanian projects: *Research on Trade and Exchange in the Cucuteni-Tripolye Network* from 2001 until 2005, and *Prehistoric Salt Exploitation in Romania and Anatolia* from 2002 until 2005; (2) two French-Romanian projects: *Aux origines de la production du sel en Europe: préhistoire et écologie des Carpates Orientales* from 2003 until 2004 and, since 2004 *Les eaux salées de la Moldavie roumaine: archéologie, histoire et écologie d'une ressource structurante du territoire*.

The research gained momentum between 2007 and 2010, when intensive investigations were carried out under the Romanian CNCSIS Idei no. 167/2007 project entitled *The salt springs of Moldavia: the ethnoarchaeology of a polyvalent natural resource* (Alexianu and Weller 2009). Given the fact that almost each day of fieldwork revealed new and often unexpected aspects concerning the exploitation, uses, distribution networks, and social contexts related to salt springs and salt mountains/cliffs, we have extended the ethnoarchaeological research framework to the entire Romanian extra-Carpathian area (see the project webpage: ethnosalro.uaic.ro), in order to build a saturated model (Alexianu 2013, 211-225).

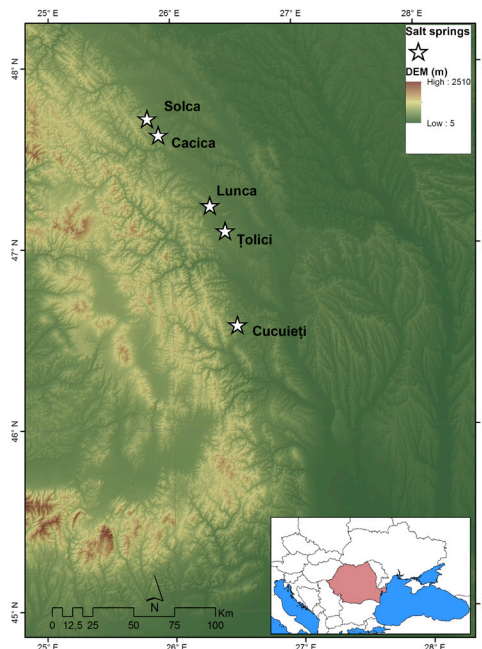


Figure 1. Map with the earliest exploited salt springs from Romania, as attested by archaeological evidence.

The first archaeological survey in the vicinity of a salt spring was conducted in 1968. The publication and interpretation of the ceramic artefacts, on the other hand, only occurred after nearly a decade, and was carried out by a prehistoric archaeologist (Ursulescu 1977). The ceramic remains discovered in the surrounding area of this salt spring, called Slatina Mare, situated in the village of Solca (Figure 2), Suceava County, were attributed to an entire series of archaeological cultures and eras, from Starčevo-Criș, to Precucuteni, Cucuteni-phase B, the first Iron Age and the Early Modern Period. Ursulescu was the first Romanian specialist to identify in some ceramic fragments the briquetage used for the recrystallization of salt from brine. Another survey conducted in 2003 confirmed the prehistoric use of this salt spring only during the Cucuteni period (from which a large amount of briquetage were found) and the Bronze Age (Nicola et al. 2007). What seemed to be an isolated finding gave way to an entire series of salt spring for which exploitation during the archaeological time has been scientifically confirmed.



Figure 2. Brine collecting at the Solca-*Slatina Mare* salt spring.

What followed was the discovery and investigation through systematic excavations of a similar archaeological site. In the close proximity of the salt spring at Lunca-*Poiana Slatinei* (Neamț County), was identified an oval mound (60×25 m) that contained mostly Starčevo-Criș archaeological deposits with a thickness of 2.80 m. Research expansion revealed traces of Linear Pottery culture, Cucuteni culture, Bronze Age, Hallstatt and the Middle Ages (Dumitroaia 1987, Dumitroaia 1984). So far the site in Lunca-*Poiana Slatinei* (Figure 3) is, on account of the age of the exploitation—the oldest in Europe and maybe even worldwide (Weller, Dumitroaia 2005)—and in terms of the magnitude of the research carried out here—including the interdisciplinary research—the most representative specialized archaeological site found in Romania.



Figure 3. Poiana Slatinei–Lunca (Neamț County). Prehistoric and present exploitation of the salt spring. Photos by O. Weller.

At Cacica (Suceava County), despite all the changes caused by a modern salt mining exploitation that is near the salt spring, an 80-cm layer of archaeological deposits was found in the proximity of the mine, consisting in fragments of pottery (briquetage) used for boiling brine in order to produce recrystallized salt cones, and charcoal from the fires used for this purpose. The analysis of the fragments of painted pottery that were found on site showed that salt production activities were carried out here during the Cucuteni culture (Andronic 1989).

At Cucuieți (Solonț comune, Bacău County), in the Slatina Veche point, two mounds consisting of Precucuteni and Cucuteni (phase A), Bronze Age and Iron Age archaeological deposits (Munteanu et al. 2007) were identified. It should, however, be mentioned that so far no briquetage were discovered in this site.

The series of exceptional discoveries continued. In 2005, a French-Romanian team discovered the important archaeological site from Hălăbutoaia–Țolici (Figure 4), Neamț County (Weller et al. 2007, 143). Archaeological excavations started here in 2007 led to the identification of several cultural levels (Starčevo-Criș, Precucuteni, Cucuteni, and Bronze Age), with the archaeological deposit having a thickness of about eight meters. Briquetage fragments were also found here (Dumitroaia et al. 2008). The oldest deposits date back to 6000–3500 BC (Danu et al. 2010).



Figure 4. Hălăbutoaia–Țolici (Neamț County). Prehistoric and present exploitation of the salt spring. Photos by O. Weller.

What differentiates Romanian salt springs from those found in more famous areas of Europe (especially France and Germany) is the continuity of exploitation and use of natural brine even in present times (Alexianu et al. 1992; 2007) (Figure 5). This unique opportunity in Europe was capitalised by the two already-mentioned ethnoarchaeological research projects financed by the Romanian Government. The research conducted in the framework of these two projects followed two main directions: the identification of the salt springs and salt mountains/cliffs and the adjacent archaeological vestiges, and the ethnological investigations through spatial analysis. As we did not commence with preconceived ideas, realities on the field forced us to address quite diverse topics (the only ones mentioned here being the ones related strictly to the salt springs).



Figure 5. Present-day exploitation at Lunca-Poiana Slatinei. Photo by O. Weller.

Thus, much needed attention was given to abandoned salt springs. We defined a typology of salt-spring catchment systems, we performed a classification of settlements that use salt springs, we analysed the means of transport of natural brine, we identified the spatial-temporal strategies for producing recrystallized salt (Rmn. *huscă*), and studied the transmission of knowledge from one generation to another. In terms of current use of natural brine from salt springs we studied human nutrition, food conservation, animal nutrition, traditional human salt therapy, craft uses, hunting and salt spring related hunting, the symbolic use of salt, exchange, sale, gift, etc. (Alexianu, Weller and Brigand, 2007).

Ethnological research was conducted based on original surveys that have continuously been adapted, improved and that became more complex, with information from all age groups, from children to 80–90-years-old elders. Especially the latter proved to be the owners of extremely valuable information on a range of issues that have never been studied in Romania, notably in ethno-archaeology. The memory of these elders and the persistence of some resilient behaviour uncovered a complex universe of salt, which also represents a unique point of reference within the intangible World Heritage.

As is known, the archaeological approach to salt spring exploitation has definite inherent limits even with the increasing number of multidisciplinary approaches. The peculiar opportunity offered by many rural areas in Romania with resilient behaviours of natural brine exploitation and supplying, showed how many unexpected reverberations salt manifests in the various aspects of human existence. Entirely unexpected was the phenomenon of generalised supplying with brine from salt springs. Likewise, totally unforeseen were the various uses of this brine in alimentation and food preservation (Alexianu et al. 2014, 33). A great surprise was the magnitude of therapeutic uses of salt and brine from salt springs, practices that confirm ancient Greek and Roman sources (Curcă 2007, Sandu et al. 2010). Ethnological research unquestionably showed the complexity of other dimensions, for instance the economic and symbolic dimension of salt.

There is, naturally, an obvious minimal methodological reserve to reject the trap of actualism and not to transplant in a more or less mechanical way the realities

of today in the archaeological past, more so during prehistoric times. Although it is impossible to precisely define the contents of one or another dimension of prehistoric times, it is important to realize that such dimensions, unimaginable to any professional archaeologist in the strict sense, have to have definitely existed in the very distant past.

A high-impact move for raising awareness about the importance of the Romanian salt springs was designed and realized in 2006 and consisted of a specialized exhibition of the Museum of Eastern Carpathians in Sfântu Gheorghe (in collaboration with numerous other museum and national archives of Romania). The exhibition, entitled *Salt, Time, Man* occasioned the publication of an extensive 250 page catalogue that includes numerous colour and b&w illustrations. Effectively, the editors drew attention to the small impact that the earliest evidence of salt exploitations in the world has in the Romanian society: "... in Romania, unlike many other European countries that are rich in salt, both research concerning the relationship between human and salt and also its public exposure are much less developed. In the Romanian society there is still no proper understanding of the importance of the natural heritage of the various manifestations of salt, as well as the cultural heritage of human beliefs and practices based on this mineral. Many archaeological remains of ancient salt exploitations, tangible and intangible manifestations in popular culture related to the exploitation, processing and use of salt, still do not receive adequate protection, neither from society as a whole, nor from the local communities or even the state structures in the field" (Cavruc, Chiricescu 2006, 7). The catalogue contains valuable micro summaries concerning archaeological remains of salt exploitation in Romania during the Neo-Eneolithic, Bronze Age and Early Iron Age, and a selective repertoire of salt springs in eastern Transylvania.

Echoes of this successful temporary exhibition were not limited to the time during which the exhibition was open; it had a considerable impact that it on the very organization of museums across Romania, in the form of permanent exhibitions. First and foremost the case of the Museum of History and Archaeology in Piatra Neamţ, a notable tourist centre in eastern Romania, where in 2009, at the initiative and under the leadership of Dr Gheorghe Dumitroaia, director of Neamţ County Museum, an entire wall of an exhibition room was museographically arranged as to present the importance of the site from Țolici–Hălăbutoaia (Figure 6). An unusual exhibit of great visual impact is a hollow tree trunk that is placed inside the spring in order to prevent the collapse of its banks (Rmn. *buduroi*). We emphasize that this is not the original *buduroi* from the source at Țolici–Hălăbutoaia, which was left *in situ* so as to not disturb in any way the traditional exploitation of the salt spring that still occurs at this site. The *buduroi* shown in the exhibition comes from an abandoned salt spring in the vicinity of the one currently used. Although it was made in contemporary times, it is similar to a Late Neolithic one discovered in a salt spring in France (Bernard et al. 2007). Photos of the archaeological explorations conducted here, but also of the actual exploitation stages of the present-day exploitation of the spring, provide the context necessary

for understanding the functionality of the three-dimensional ethnographic or archaeological pieces arranged to the left and right of the exhibit piece. Special mention should be made of the touristic brochure dedicated to the salt spring exploitation in Eastern Romania, which provide additional information to the interested visitors.

Another important step in highlighting to the public the importance of the salt springs was taken a few years after, in 2011, by the Museum of History and Ethnography in Târgu Neamț, a tourist town in eastern Romania located just a few miles from the site of Lunca–Poiana Slatinei. The hall (Figure 7) dedicated to the world's oldest traces of salt production through recrystallization of salt from brine collected from salt springs, was organized by the head of the archaeological team at Poiana Slatinei, Dr Gh. Dumitroaia, seconded by V. and R. Diaconu, museum curators.

In general, the same exhibition principles were followed as in the similar section in the Piatra Neamț Museum. In this case too, it should be mentioned that the exhibition does not display the original *buduroi* from Poiana Slatinei, where the exploitation of the salt spring by the rural communities continues to this day. The *buduroi* displayed in the permanent exhibition at the Târgu Neamț Museum came from Oglinzi-Slătior, a less important salt spring from the area.



Figure 6. Display case with the *buduroi* from Țolici–Hălăbutoaia in the permanent exhibition of the Piatra Neamț County Museum.



Figure 7. Display case with the *buduroi* from the area of Lunca–Poiana Slatinei in the permanent exhibition of the History and Ethnography Museum in T3rgu Neam7. Photo courtesy of V. Diaconu.

It is expected that museums from the neighbouring counties of Suceava and Bacau will further this initiative of emphasising the salt springs located in the respective counties that show traces of ancient exploitation. An important argument in this regard is the considerable impact that these sections have had on visitors. We are, of course, referring to visitors from Romania, but especially to foreign ones, which seem to appreciate to a higher degree the significance of these archaeological facts, which are little known abroad.

In addition to pursuing increasingly complex research in the field (e.g., Brigand, Weller 2012; Chapman et al. 2000; Monah, Dumitroaia 2007; Monah 2008; Sandu et al. 2012), and the ingenious archaeological and ethnographic exhibits of the museums, the specialists have recently stepped up their efforts to present to the Romanian public, by means of the mass media, the key role that the salt springs played 8000 years in the life of the Neolithic and Chalcolithic populations from Romania of that time.

Certain local authorities and a number of private entrepreneurs have stressed that the capitalisation of the tourist areas containing the oldest traces of salt exploitation in Romania and the world will become, sooner or later, an imminent issue. The greatest challenge is to find a balance between the necessary development (upgraded access roads, upgrading the operating areas, etc.) and the protection of still-alive traditional practices of salt exploitation and use, in rural areas.

The recent comprehensive and nuanced approaches regarding the world heritage (Willems 2012) and the complementarity between the natural, tangible and intangible heritage in the 8000-years-old exploitation of salt springs in Romania are solid arguments for including some of them between the most significant monuments of the world. The excitement that can be felt when visiting them comes not from their greatness as is the case usually. It is rather the thrill of an *illo tempore* transcendence, the excitement of reliving original human reactions in contact with a natural resource that would, in time, decisively contribute to the stability of human communities “as well as enhancing the quality of food, storage, food consumption, and animal and human health” (Ellis 1984, 205).

ACKNOWLEDGEMENT

This work was supported by a grant of the Romanian National Authority for Scientific Research, CNCS–UEFISCDI, project number PN-II-ID-PCE-2011-3-0825, 219/5.10.2011, *The ethno-archaeology of the salt springs and salt mountains from the extra-Carpathian areas of Romania* (ethnosalro.uaic.ro), and by the Partnership in Priority Domains project PN-II-PT-PCCA-2013-4-2234 no. 314/2014 of the Romanian National Research Council, *Non-destructive approaches to complex archaeological sites. An integrated applied research model for cultural heritage management* (arheoinvest.uaic.ro/research/prospect).

BIBLIOGRAPHY

- Alexianu M & Weller O 2009, ‘The Ethnosal project. Ethnoarchaeological investigation at the Moldavian salt springs’ *Antiquity*, vol. 83, issue 321. Available from: <http://antiquity.ac.uk/projgall/weller321/> [15.03.2015].
- Alexianu, M 2013, ‘Saturated model. A first application in world and Romanian ethno-archaeology’, in *Contesting Ethnoarchaeologies*, A Marciniak & N Yalman (eds), Series: One World Archaeology, Vol. 7, Springer, New York, pp. 211-225.
- Alexianu, M, Weller, O, Brigand, R Curcă, R-G 2014, ‘Annäherungen an eine Unsichtbare Vergangenheit: Ethnoarchäologische Forschungen zu den Salzwasserquellen der Moldauischen Vorkarpaten (Rumänien)’, *Studia Antiqua et Archaeologica* 20, pp. 7-35.
- Alexianu, M, Weller, O, Brigand, R, Curcă, R-G, Cotiugă, V & Moga, I 2011 ‘Salt Springs in Today’s Rural World. An Ethnoarchaeological Approach in Moldavia (Romania)’, in *Archaeology and Anthropology of Salt: a Diachronic Approach Proceedings of the International Colloquium, 1-5 October 2008 “Al. I. Cuza” University (Iași, Romania)*, eds M Alexianu, O Weller & R-G Curcă, British Archaeological Reports 2198, Archaeopress, Oxford, pp. 7-23.
- Alexianu, M, Weller, O, & Brigand, R 2012/2013, ‘EthnosalRo: an ethnoarchaeological project on Romanian salt’, *The European Archaeologist* 38, pp. 17-22.

- Alexianu, M, Dumitroaia, Gh & Monah, D, 1992 ‘Exploatarea surselor de ap3 s3rat3 din Moldova: o abordare etnoarheologic3’, *Thraco-Dacica* 13/1-2, pp. 159-167.
- Alexianu, M, Dumitroaia, Gh & Monah, D 2007, ‘The Exploitation of the Salt-Water Sources in Moldavia: an Ethno-Archaeological Aproach’, in *L'exploitation du sel 3 travers le temps*, eds D Monah, Gh Dumitroaia, O Weller & J Chapman, Constantin Matas3, Piatra Neamț, pp. 279-298.
- Alexianu, M, Weller, O & Brigand, R 2007, *Izvoarele de ap3 s3rat3 din Moldova subcarpatic3. Cercet3ri etnoarheologice*, Demiurg, Iași.
- Andronic, M 1989, ‘Cacica – un nou punct neolitic de exploatare a s3rii’, *Studii și cercet3ri de istorie veche și arheologie* 40, 2, pp. 171-177.
- Bernard, V, P3trequin, P, Weller O 2007, ‘Captages en bois 3 la fin du N3olithique: Les Fontaines Sal3es 3 Saint-P3re-sous-V3zelay’ in *Sel, eau et foret. D’hier 3 aujourd’hui*, eds O Weller, A Dufraisse, P P3trequin, Besançon, pp. 299-335.
- Brigand, R & Weller, O 2012, ‘Natural resources and settlements dynamics during Later Prehistory in Central Moldavia (Romania). An integrated GIS for spatial archaeological studies’ in *Interdisciplinarity Research in Archaeology. Proceedings of the First Arheoinvest Congress, 10–11 June 2011, Iași, Romania*, eds V Cotiug3 & S Caliniuc, British Archaeological Reports 2433, Archaeopress, Oxford, pp. 1-18.
- Cavruc, V & Chiricescu, A (eds) 2006, *Sarea, Timpul și Omul. Catalogul expoziției*. Angustia, Sf3ntu Gheorghe.
- Chapman, J, Monah, D, Dumitroaia, Gh, Armstrong, H, Millard, A & Francis, M 2000, ‘The exploitation of salt in the prehistory of Moldavia, Romania’, *Archaeological Reports for 1999/2000*, 23, pp. 10-20.
- Curc3, R 2007, ‘La halotherapie –textes antiques et pratiques actuelles dans la Roumanie orientale’, in *L'exploitation du sel 3 travers le temps*, eds D Monah, Gh Dumitroaia, O Weller & J Chapman, Constantin Matas3, Piatra Neamț, pp. 259-269.
- Danu M, Gauthier E, & Weller O 2010, ‘Human impact and vegetation history on salt spring exploitation (H3l3butoaia-Țolici, Petricani, Neamț, Romania)’, *International Journal of Conservation Science*, vol I, Issue 3, July-September, pp. 167-173.
- Dumitroaia, Gh 1987, ‘La station arch3ologique de Lunca-Poiana Slatinei’, in *La Civilisation de Cucuteni en contexte europ3en*, eds M Petrescu-D3mbovița, N Ursulescu, D Monah, V Chirica, Bibliotheca Archaeologica Iassiensis, I, Iași, pp. 253-258.
- Dumitroaia, Gh 1994, ‘Depunerile neo-eneolitice de la Lunca și Oglinzi, județul Neamț’, *Memoria Antiquitatis* 19, pp. 7-82.
- Dumitroaia, Gh, Munteanu, R, Weller, O, Garv3n, D, Diaconu, V & Brigand, R 2008, ‘Un nou punct de exploatare a apei s3rate 3n preistorie: Țolici-H3l3butoaia, jud. Neamț’, in *Sarea, de la prezent la trecut*, eds D Monah, Gh Dumitroaia, D Garv3n, Constantin Matas3, Piatra-Neamț, pp. 203-224.

- Harding, Anthony 2013, *Salt in Prehistoric Europe*, Sidestone Press, Leiden.
- Monah, D, Dumitroaia Gh 2007, 'Recherches sur l'exploitation préhistorique du sel en Roumanie', in *L'exploitation du sel à travers le temps*, eds D Monah, Gh Dumitroaia, O Weller & J Chapman, Constantin Matasă, Piatra Neamț, pp. 13-34.
- Munteanu, R, Garvăn, D, Nicola, D, Preoteasa, C & Dumitroaia, Gh 2007, 'Cucuieti-Slatina Veche (Romania). Prehistoric Exploitation of a Salt Resource', in *L'exploitation du sel à travers le temps*, eds D Monah, Gh Dumitroaia, O Weller & J Chapman, Constantin Matasă, Piatra Neamț, pp. 57-70.
- Monah, D 2008, 'Arheologia preistorică a sării în România. Scurt istoric', in *Sarea, de la prezent la trecut*, eds D Monah, Gh Dumitroaia, D Garvăn, Constantin Matasă, Piatra-Neamț, pp. 13-39.
- Nicola, D, Munteanu, R, Garvăn, D, Preoteasa, C & Dumitroaia, Gh 2007, 'Solca – Slatina Mare (Roumanie). Preuves archéologiques de l'exploitation du sel en préhistoire', in *L'exploitation du sel à travers le temps*, eds D Monah, Gh Dumitroaia, O Weller & J Chapman, Constantin Matasă, Piatra Neamț, pp. 35-56.
- Sandu, I, Poruciuc, A, Alexianu, M, Curcă, R-G & Weller, O 2010, 'Salt and Human Health: Science, Archaeology, Ancient Texts and Traditional Practices of Eastern Romania', *The Mankind Quarterly* L, 3, pp. 225-256.
- Sandu, I, Weller, O, Stumbea, D & Alexianu M 2012, 'Analyses archéométriques sur les moules à sel chalcolithiques de l'est de la Roumanie', in *Salt and Gold: The Role of Salt in Prehistoric Europe*, eds V Nikolov & K Bacvarov, Faber, Provadia-Veliko Tarnovo, pp. 143-154.
- Ursulescu, N 1977, 'Exploatarea sării din saramură în neoliticul timpuriu, în lumina descoperirilor de la Solca (jud. Suceava)', *Studii și Cercetări de Istorie Veche* 28/3, pp. 307-317.
- Ursulescu, N 1995, 'L'utilisation des sources salées dans le néolithique de la Moldavie (Roumanie)' in *Nature et Culture*, ed. M Otte, ERAUL, 68, pp. 487-495.
- Weller, O 2015, 'First salt making in Europe: a global overview from Neolithic times', in *Archaeology of Salt. Approaching an invisible past*, eds R Brigand, O Weller, Sidestone Press, Leiden, pp. 67-82.
- Weller, O & Dumitroaia, Gh 2005, 'The earliest salt production in the World. An Early Neolithic exploitation in Poiana Slatinei-Lunca, Romania', *Antiquity* 79, 306. Available from: <<http://antiquity.ac.uk/ProjGall/weller/index.html>> [15.03.2015].
- Weller, O, Brigand, R & Alexianu, M 2007, 'Cercetări sistematice asupra izvoarelor de apă sărată din Moldova. Bilanțul explorărilor din anii 2004-2007 efectuate în special în județul Neamț', *Memoria Antiquitatis* 24, pp. 121-190.
- Weller, O, Brigand, R & Alexianu, M 2010, 'Recherches systématiques autour des sources salées de Moldavie. Bilan des prospections 2008-2010', *Memoria Antiquitatis* 25, pp. 437-504.

Willems, W J H 2012 'World Heritage and Global Heritage: the tip of the Iceberg', in *Proceedings of the First International Conference on Best Practices in World Heritage: Archaeology, Mahon, Minorca, Balearic Islands, Spain, 9-13 April 2012*, ed. A Castillo, Universidad Complutense de Madrid, Madrid, pp. 36-50.

ORGANIZACIONES PARTICIPANTES
ATTENDING ORGANIZATION

1. Amics de la Mar de Menorca. Spain
2. Association for Research and Conservation of Culture (ARCC)(ARC) ad French Center For Ethiopian Studies. Ethiopia
3. Asociación de cocina FRA ROGER, Menorca. Spain
4. APSARA National Authority. Cambodia
5. Ayuntamiento de Alaior. Spain.
6. Ayuntamiento de Ciutadella. Spain
7. Ayuntamiento de Maó. Spain
8. Ayuntamiento de Ferreries. Spain.
9. Ayuntamiento de Córdoba.Spain
10. Benemérita Universidad Autónoma de Puebla. Mexico
11. Biblioteca Pública de Maó. Spain.
12. Dirección General de Bellas Artes, Bienes Culturales y de Archivos y Bibliotecas. Ministerio de Cultura. Spain
13. Cairo University. Egypt
14. Centro de Estudios Wangülen, Astronomía Cultural Americana (WACA). Chile
15. Cercle Artístic de Ciutadella, Menorca. Spain.
16. Conselleria de Cultura, Patrimoni i Educació. Consell Insular de Menorca. Spain
17. CommonSites. Netherlands
18. DOCUMENTO, corporate group. Brazil
19. Dubai Municipality. United Arab Emirates
20. Escola d'Art Dramàtic de Menorca. Spain
21. Eötvös Loránd Tudományegyetem. Budapest. Hungary
22. Fundació Destí Menorca. Spain
23. Gabinete de Arqueología, Oficina del historiador de la ciudad. La Habana Vieja. Cuba

24. Grupo Ciudades Patrimonio de la Humanidad. Spain
25. Hispania Nostra. Asociación para la Defensa del Patrimonio Cultural y Natural. Spain
26. ICOMOS, International Council on Monuments and Sites.
27. ICOMOS Spain
28. ICOMOS. Mexico
29. ICOMOS International Conservation Center of Xi'an. China
30. Instituto de Educación Secundaria de Alaior. Spain.
31. Instituto de Medio Ambiente. Chile
32. INAH. Instituto Nacional de Antropología e Historia. Mexico.
33. INCIPIT-CSIC, Instituto de Ciencias del Patrimonio. Spain
34. Institute of Archaeology of New Caledonia and the Pacific. New Caledonia.
35. 'Institut d'Estudis Baleàrics, Govern de les Illes Balears
36. Institut Menorquí d'Estudis. Spain.
37. La Caixa. Spain
38. Local media Menorca: Cope; La Ser, Onda Cero, IB3 Televisió, Menorca al Día, ,menorcadiario.es, radio Menorca,
39. L'Institut d'Estudis Baleàrics
40. L. S. Raheja School of Architecture, Bombai. India.
41. JAS. Arqueología. Spain.
42. Museu da República, Río de Janeiro. Brazil
43. Museu de Menorca. Spain
44. Museu Militar de Menorca. Spain.
45. Museu Municipal de Ciutadella, Menorca. Spain
46. Museu d'Història de Tarragona. Ayuntamiento de Tarragona Spain
47. Museo Nacional de Costa Rica. Costa Rica
48. National Council for Arts and Culture. Nigeria

49. National Taipei University. China
50. Organization of World Heritage Cities
51. Paisaje Transversal. Spain
52. Parques Sintra-Monte da Lua, S.A. Portugal
53. Plataforma Mezquita-Catedral de Córdoba: Patrimonio de tod@s. Spain.
54. Plataforma Ciudadana contra la Torre Cajasol- ¡Tumbala! Spain
55. Patronato de La Alhambra y el Generalife. Spain.
56. Pontificia Universidad Católica de Chile. Chile
57. Portland State University. USA
58. Port Sostenible. Asociación del Puerto de Mahón. Spain
59. Samara State Academy of Social Sciences and Humanities. Russia
60. Secció d'Arqueologia de Menorca del Col·legi Oficial de Doctors i Llicenciats en Filosofia i Lletres i en Ciències de les Illes Balears. Spain.
61. SEPRONA Comandancia Guardia Civil de Menorca
62. Sustainable Preservation Initiative. USA.
63. SC Archeomanagement, Iași. Romania
64. Tower of David, Museum of History of Jerusalem. Israel
65. UNICAMP, Universidade Estadual de Campinas. Brazil
66. Unió de Pagesos de Menorca. Spain
67. Universidad Complutense de Madrid. Spain
68. Universidad de Burgos. Spain
69. Universidad de Granada. Spain
70. Universidad de Zaragoza. Spain
71. Universidad Michoacana de San Nicolás de Hidalgo. México.
72. Universidad Politécnica de Cartagena. Spain
73. Universidad Politécnica de Madrid. Spain
74. Universidade de Coimbra. Portugal
75. Universidade Federal do Rio de Janeiro. Brazil

76. Università degli Studi di Palermo. Italy
77. Università degli Studi di Sassari. Italy
78. Università de Torino. Italy
79. Université Libre de Bruxelles. Belgium
80. Universitat de Barcelona. Spain
81. Universitat Ramon Llull. Spain
82. Universitatea din Iași. Romania
83. Universiteit Leiden. Netherlands
84. University College of London. United Kingdom
85. University of Brighton. United Kingdom
86. University of Cambridge. United Kingdom
87. University of Flinders. Australia
88. University of Queensland. Australia
89. University of Illinois. USA
90. University of Pennsylvania Museum of Archaeology and Anthropology. USA
91. University of the Philippines. Republic of the Philippines
92. Univerzitet u Novom Sadu. Serbia
93. UNESCO
94. Vietnam Museum of Ethnology. Vietnam
95. Xin Xoriguer, Spain







**RECUERDA QUE AÚN PUEDES SEGUIRNOS EN
NUESTRAS REDES SOCIALES**

REMEMBER YOU CAN STILL FOLLOW US IN OUR SOCIAL MEDIA



BLOGGER

<http://congresobuenaspracticasp.m.blogspot.com>



TWITTER

<https://twitter.com/CongresoBPPM>



FACEBOOK

<https://www.facebook.com/BuenasPracticaspM>

<http://congresopatrimoniomundialmenorca.cime.es>